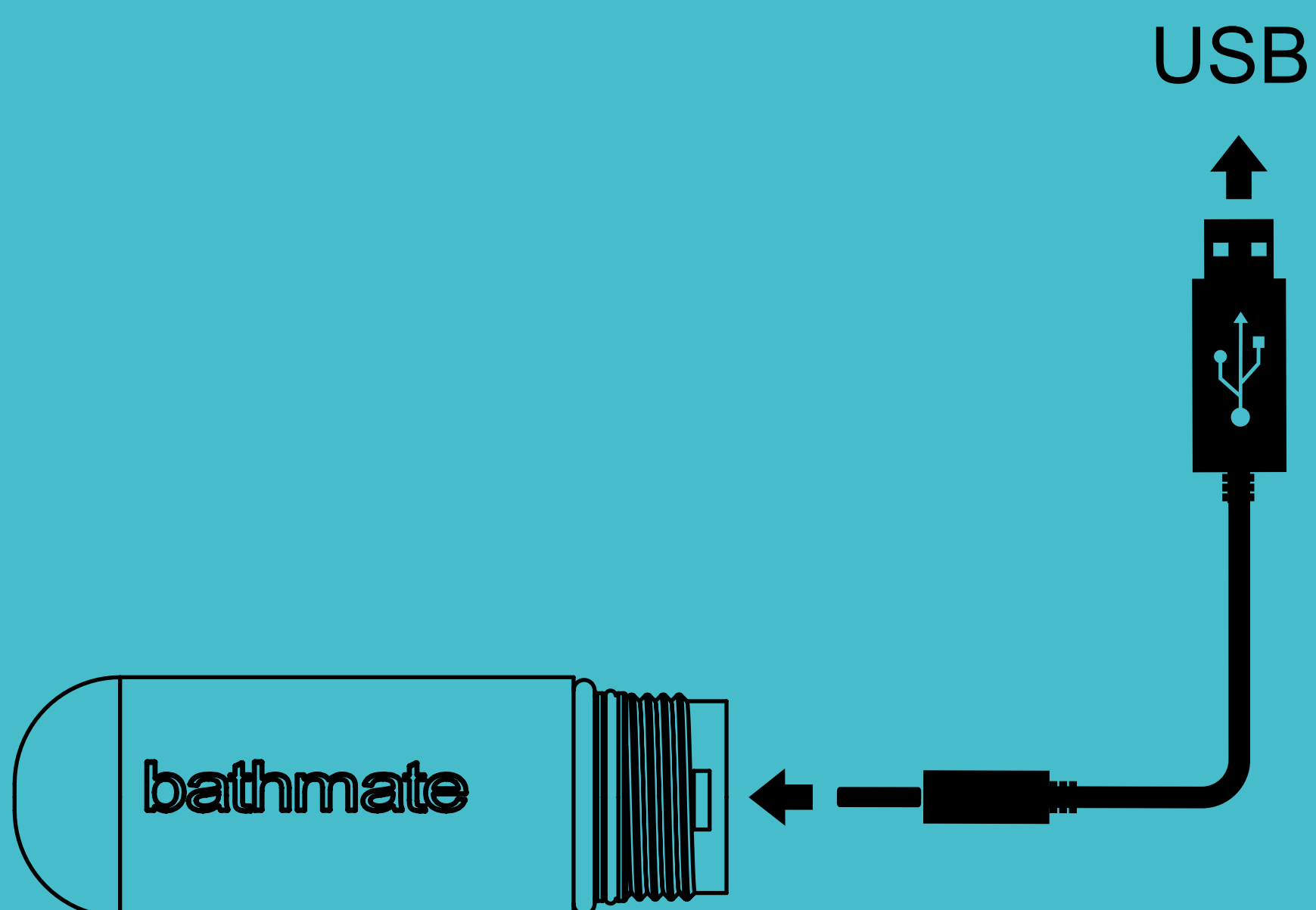
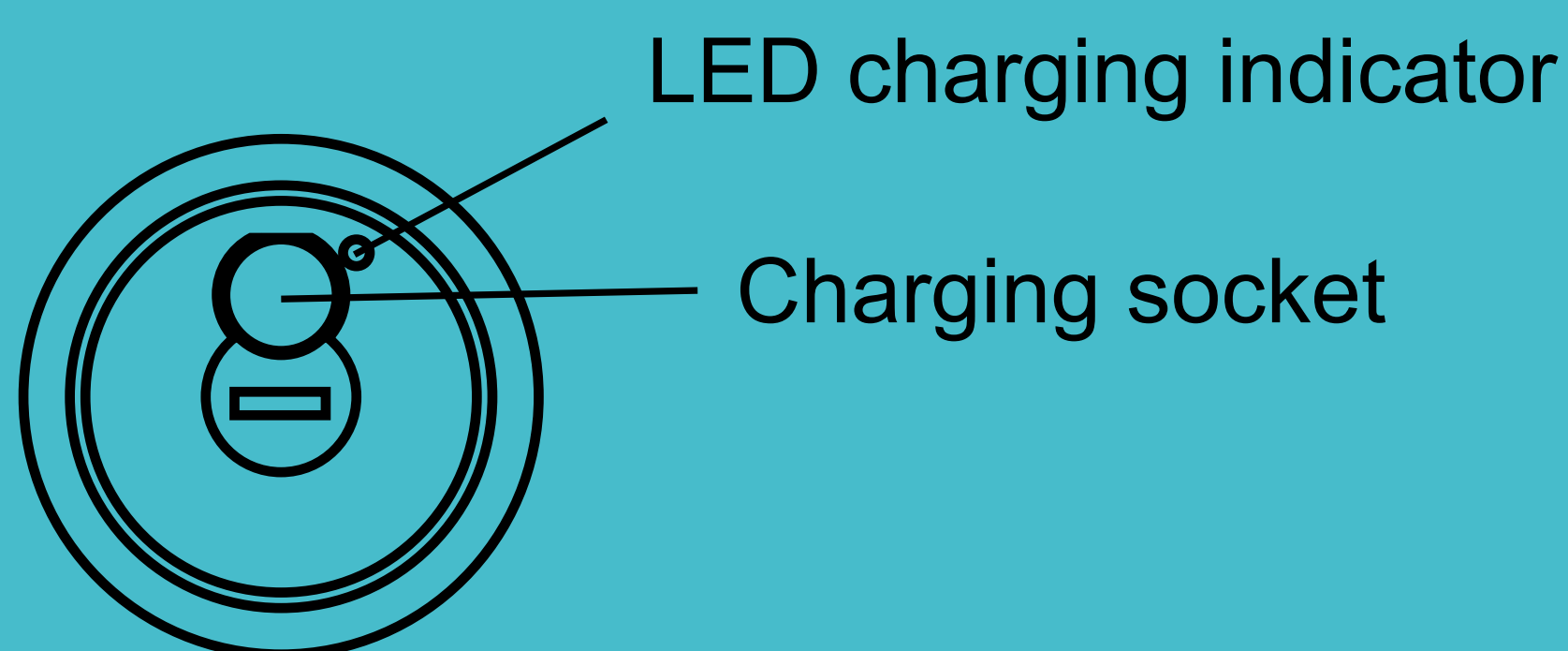
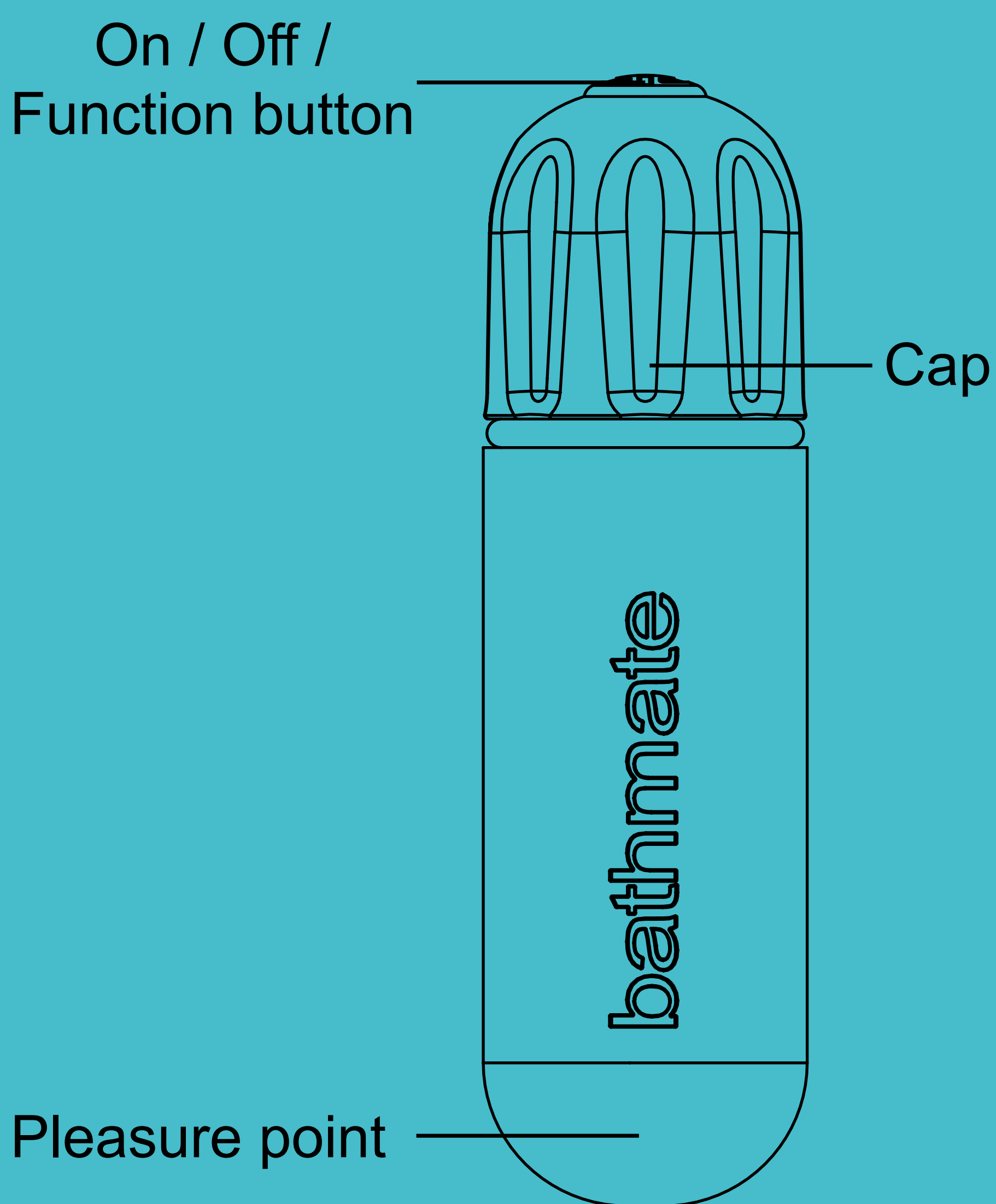
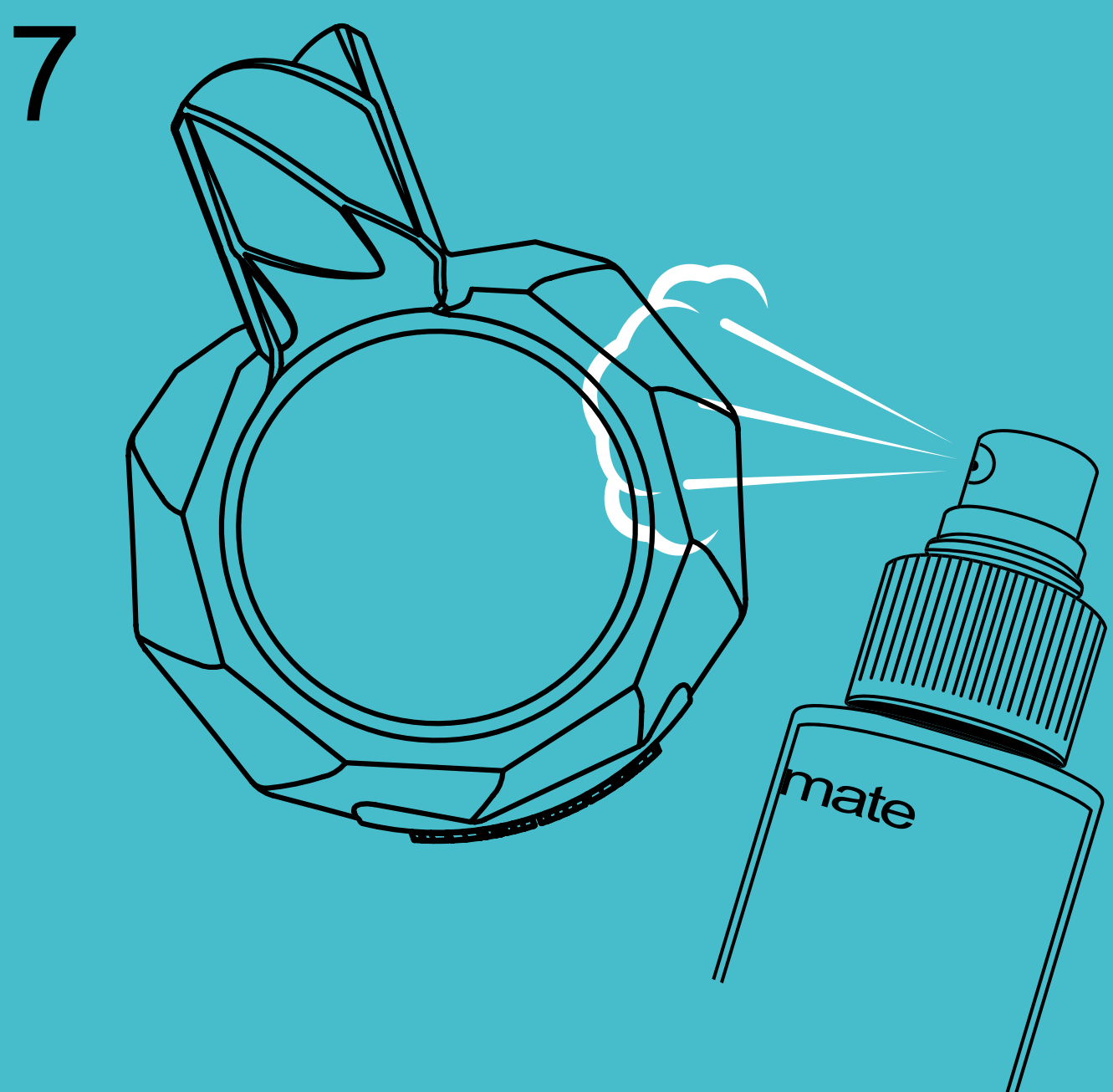
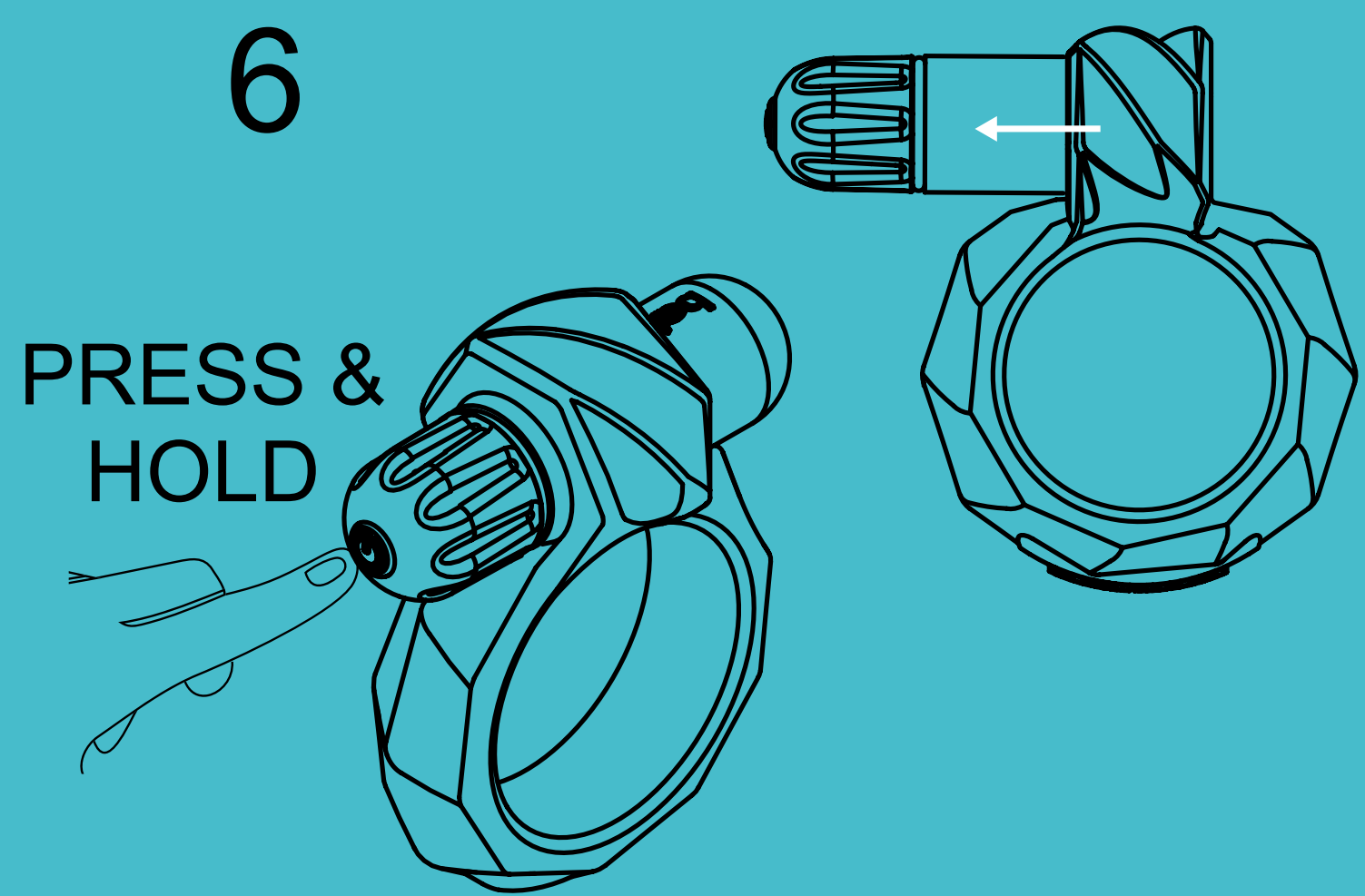
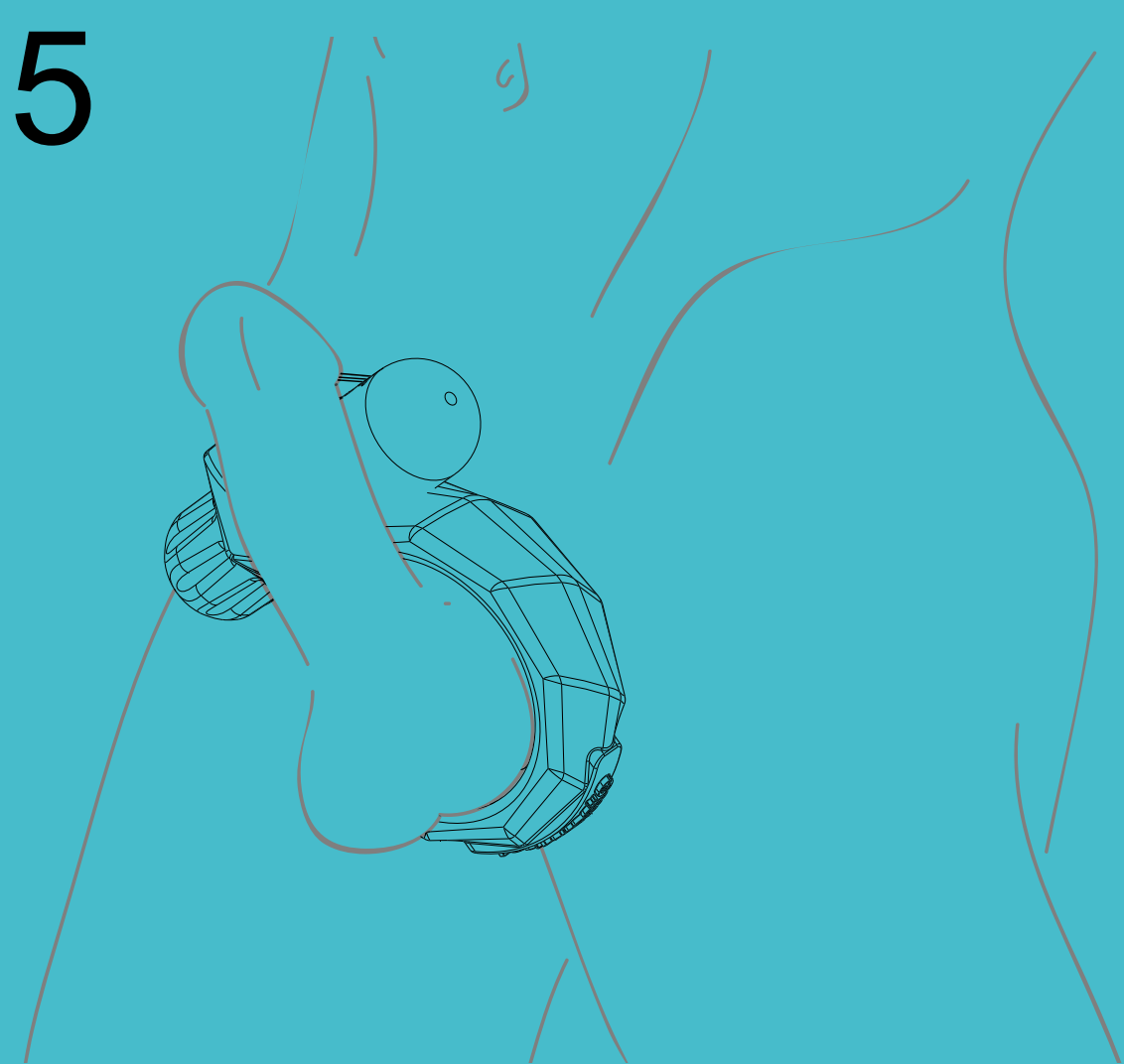
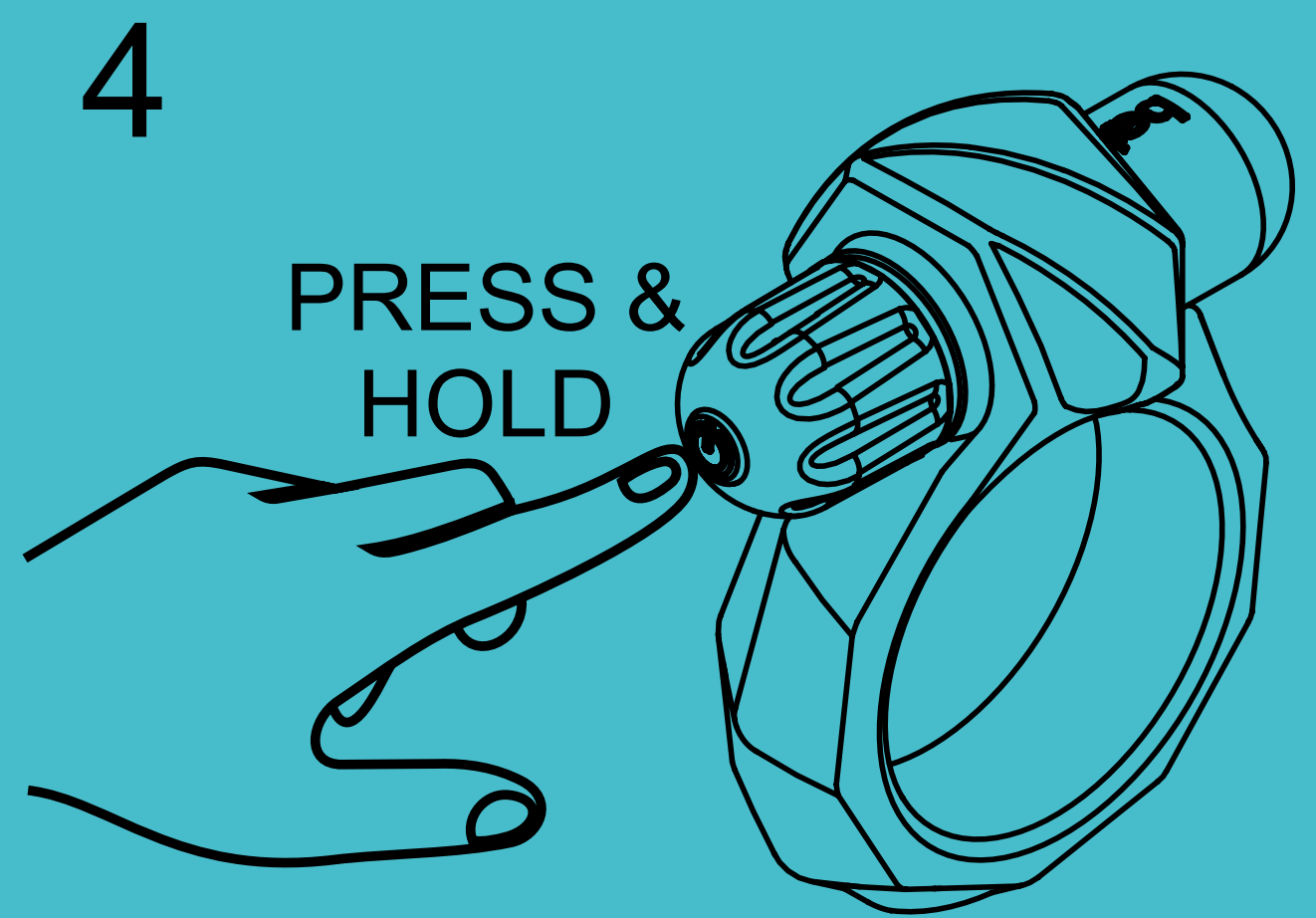
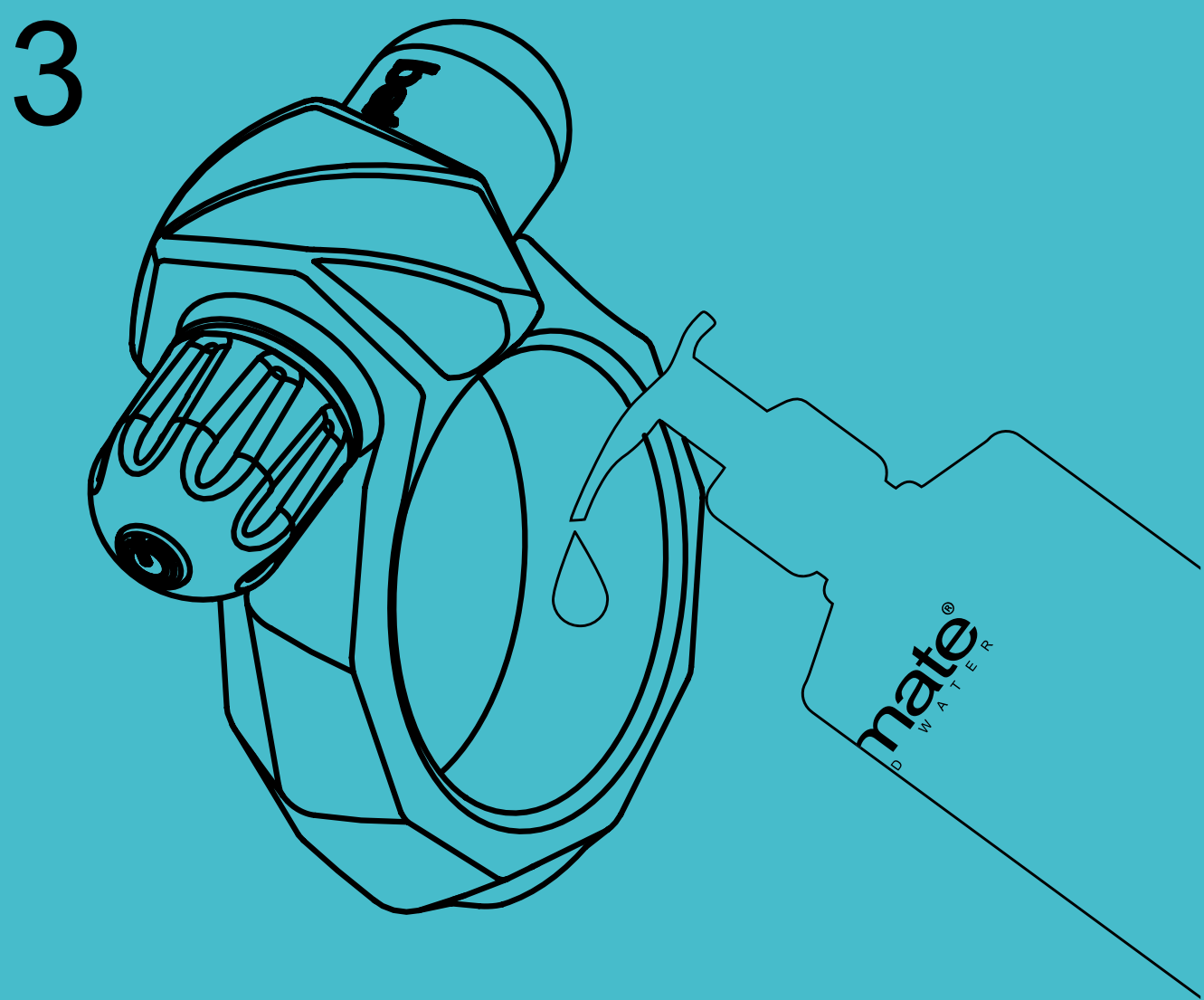
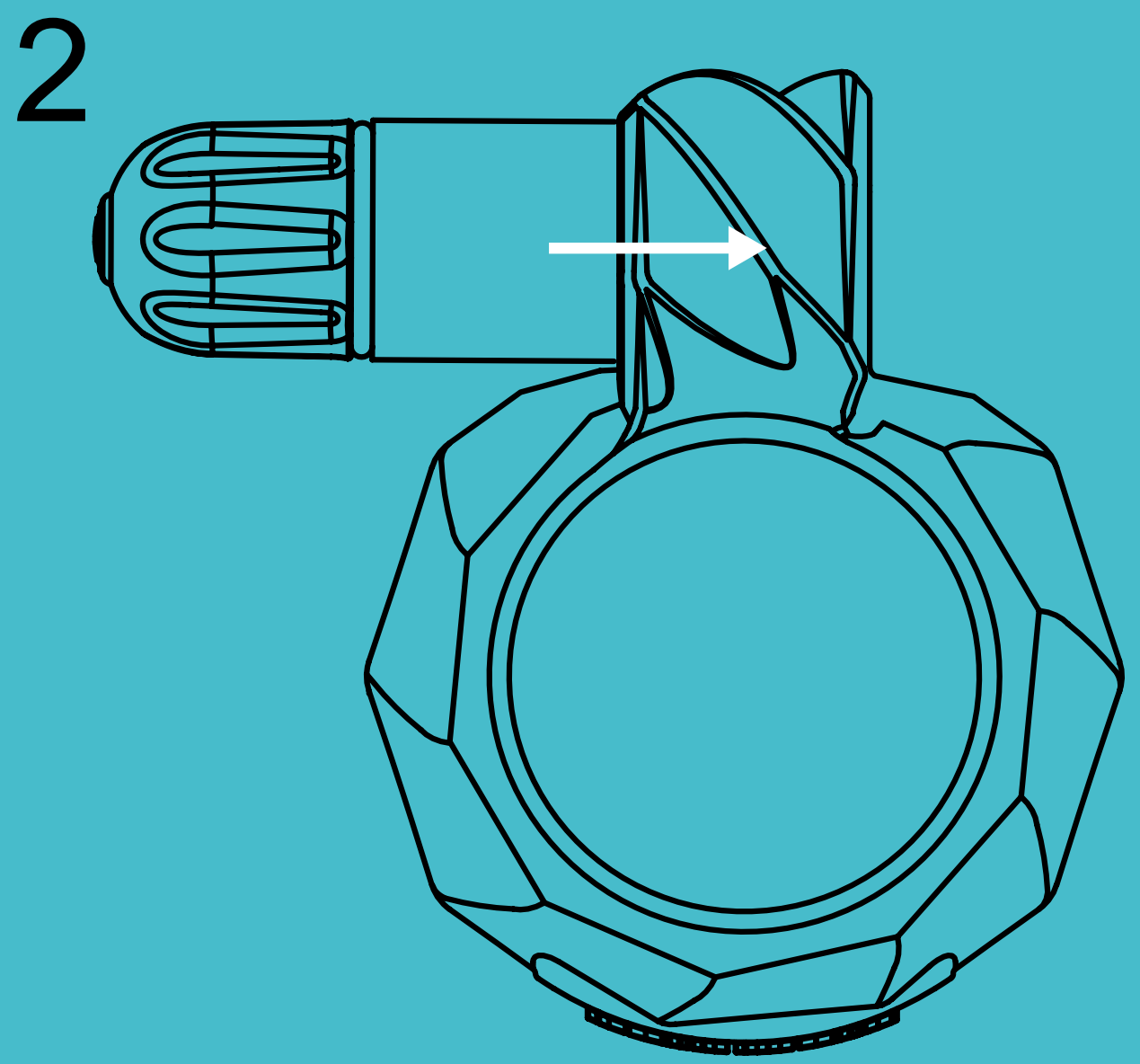
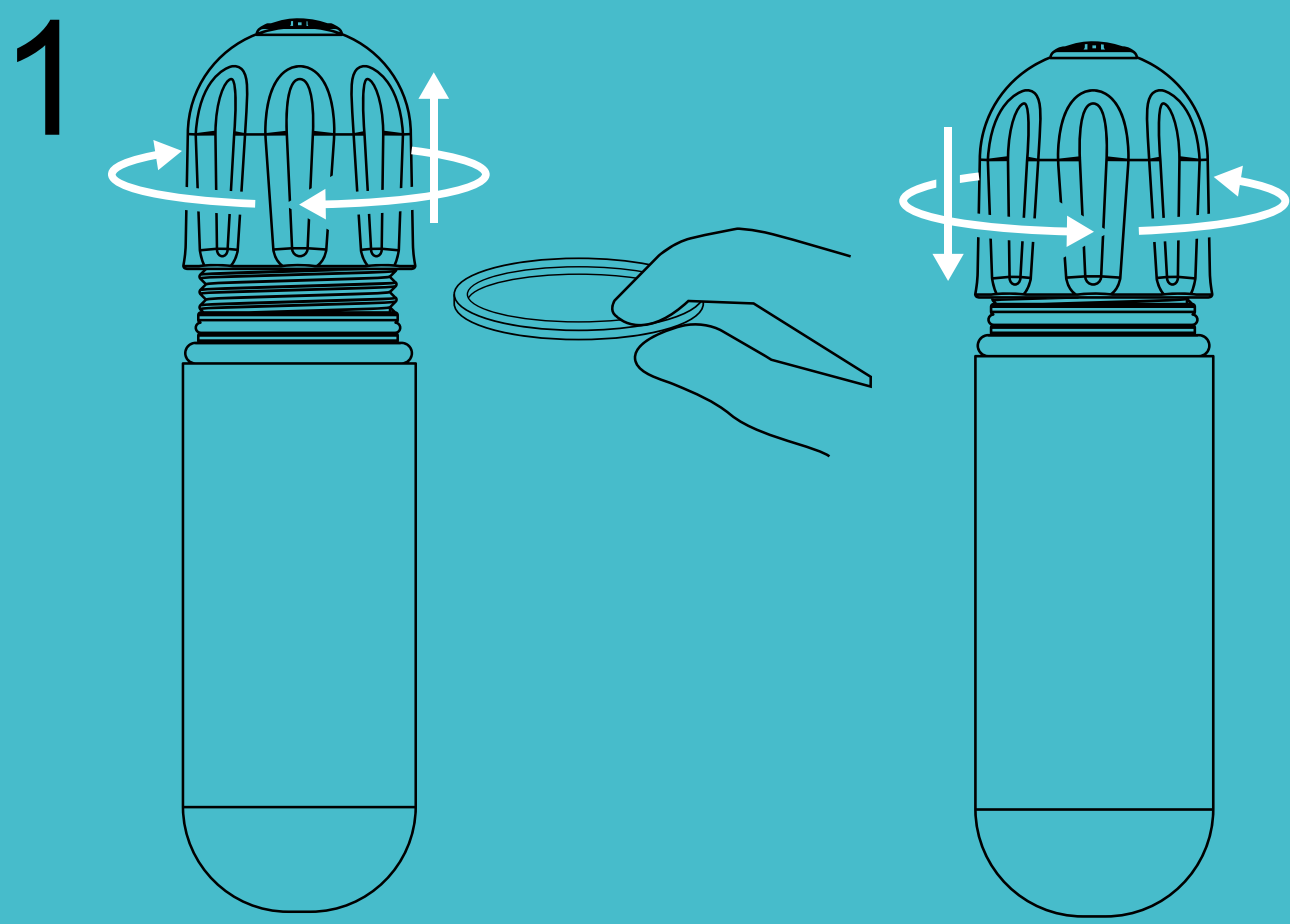


MAXIMUS
VIBE

U S E R G U I D E





TIPS FOR USE

1. Before first use, remove the plastic spacer from the VIBE Bullet by unscrewing the cap and gently sliding off. Replace the VIBE Bullet cap by screwing tightly back on, ensuring the product is water-tight. Ensure you have read the VIBE Bullet care instructions before using this product.
2. Slide the Bathmate VIBE Bullet into the Maximus VIBE.
3. Apply a liberal amount of water-based lubricant such as Bathmate Lube directly to your Maximus VIBE and your body. **DO NOT USE A SILICONE-BASED LUBRICANT.**
4. To activate the Bathmate VIBE Bullet, press the on/off button to switch on. Continue to press the on/off button to cycle through the 10 different intensity patterns to find your preferred pleasure wave setting.
5. Relax and enjoy your play session.
6. At the end of your play session press and hold the on/off button for 2 seconds to switch the VIBE Bullet off and gently remove from the Maximus VIBE.
7. Clean and store your products according to the guide.

CLEANING, STORAGE AND SAFETY

To prolong the life of your Bathmate Maximus VIBE we recommend that you follow the steps below:

Clean thoroughly before and after each use. Bathmate Toy cleaning spray and wipes are available at **www.bathmatepleasure.com**.

Never use a silicone based lubricant as this will react with the silicone of your Maximus VIBE and cause it to deteriorate. Use of silicone based lubricant will invalidate your warranty.

Storing your product in a cool, dark place will prevent potential damage from sunlight and dust. Always store separately from other products.

Users of the Bathmate Maximus VIBE do so at their own risk; neither the manufacturer nor retailer assumes any responsibility or liability for the use of this product. No medical claims are warranted or implied by use of this product. If pain or discomfort is experienced during the use of this product you should discontinue use immediately.

VIBE BULLET CARE INSTRUCTIONS

Take care when using your VIBE for the first time, vibration can be intense.

- This product is for external use only.
- This product is not a children's toy. Adult use only.
- To avoid injury or aggravation of pre-existing conditions, this product should not be used on swollen or inflamed areas or skin lacerations.
- No medical claims are warranted or implied by use of this product.

- Clean your VIBE after every use.
- Take care when cleaning your VIBE, avoid getting the charging socket wet.
- Keep this product clean and ensure that it is fully dry before storing in a safe, dry place. Moisture can damage batteries and motors which will invalidate your warranty.
- Do not expose this product to water above 60°C
- Always allow your VIBE to cool down before storing in a safe place, it is electrical and motors get warm with use.
- Excessive usage of this product will wear out the motor and may cause it to overheat. If you feel that your VIBE is getting unduly hot, switch off and allow to cool down before continuing use.
- Seek medical advice before use.

CHARGING YOUR VIBE BULLETS:

This product contains a Lithium Rechargeable Battery. If battery leakage occurs, stop using immediately and avoid contact with skin. If skin contact occurs, immediately wash the area thoroughly with warm soapy water. If liquid leakage comes into contact with eyes or body tissue, immediately flush thoroughly with water and see a doctor. Treat this product with care to avoid battery leakage, combustion and explosion. Do not expose the battery to excessive physical shock. Do not take apart or attempt to repair the Vibe or battery. Do not touch the terminals of the Vibe with any metal objects.

The product may be partially charged on purchase but we recommend a full charging cycle before first use. Charge for at least 2 hours before first use. Do not switch on or use the product during the first charge cycle as this may affect the battery capacity.

- Before charging, ensure that your Vibe and the USB charging cable are dry.
- Unscrew the cap to reveal the charging socket.
- Connect the USB charging cable into a suitable USB charging port and connect to the Vibe through the charging socket.
- The LED charging indicator will glow RED to indicate that the Vibe is charging.
- Once fully charged, the LED indicator will glow GREEN.
- Once charged, remove the cable and gently replace the cap by screwing onto the body. IMPORTANT: Take care not to cross-thread the cap as this could allow water ingress.
- Do not use your Vibe with the cable attached or whilst charging.
- Only use the USB cable supplied with this product.
- Do not use the charging cable if it is damaged.
- Always disconnect charger cable before cleaning.

The bullet will take approximately 2 hours to fully charge from empty and will give you approximately 60 minutes use between charges.

ENVIRONMENTAL PROTECTION



Products marked with this symbol should not be treated as household waste. Instead, take it to a recycling centre that deals with electrical and electronic equipment.

WARRANTY

The Bathmate Maximus VIBE is designed to provide many years of trouble free use. It is covered by a 2 year warranty against defective parts or poor workmanship. Full details of the warranty and what to do in the unlikely event that your Maximus VIBE is faulty can be found at: **www.bathmatedirect.com/support**.